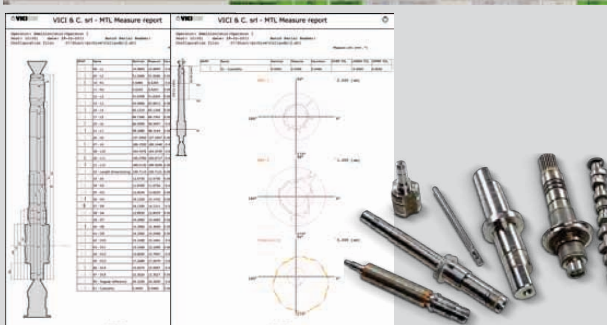
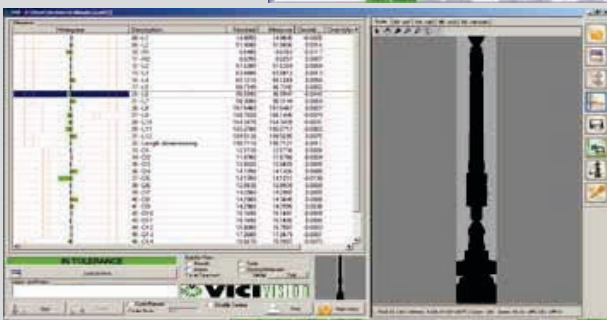
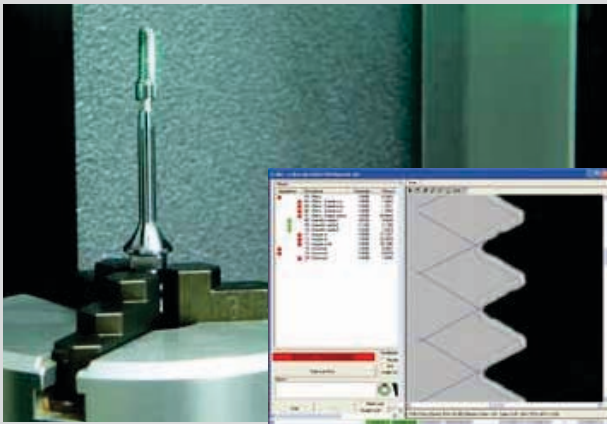


Optical measuring machines for Turned Components



TECHNICAL DATA

MODELS	MTL X5	MTL 250	MTL 300 Evo	MTL 500x60 Evo MTL 500x60 Ergon MTL 850x60 Ergon	MTL 500x120 Evo MTL 500x120 Ergon MTL 850x120 Ergon MTL 1250x120 Ergon
Measuring range	100x16 mm	270x40 mm	270x40 mm	500x60 mm (MTL 500) 870x60 mm (MTL 850)	500x120 mm (MTL 500) 870x120 mm (MTL 850) 1270x120 mm (MTL 1250)
Max loading piece (according to weight limits)	270x90 mm	270x90 mm	300x90 mm	500x180 mm (MTL 500) 870x180 mm (MTL 850)	500x180 mm (MTL 500) 870x180 mm (MTL 850) 1250x180 mm (MTL 1250)
Measurement accuracy on diameter	$(2+D[\text{mm}])/100 \mu\text{m}$	$(2+D[\text{mm}])/100 \mu\text{m}$	$(2+D[\text{mm}])/100 \mu\text{m}$	$(2+D[\text{mm}])/100 \mu\text{m}$	$(2,5+D[\text{mm}])/100 \mu\text{m}$
Measurement accuracy on height	$(5+L[\text{mm}])/100 \mu\text{m}$	$(5+L[\text{mm}])/100 \mu\text{m}$	$(5+L[\text{mm}])/100 \mu\text{m}$	$(5+L[\text{mm}])/100 \mu\text{m}$	$(5+L[\text{mm}])/100 \mu\text{m}$
Measurement repeatability on diameter	0,4 μm	0,4 μm	0,4 μm	0,4 μm	0,6 μm
Measurement repeatability on height	3 μm	3 μm	3 μm	3 μm	3 μm
Power supply	230 V - 50/60Hz				

No compressed air required

Data indicated refers to measurements taken with a temperature of 20°C on clean and rectified surfaces. Data may vary according to shape and surface condition of the pieces.



®

Multisensor Measurements for Manufacturing Professionals

